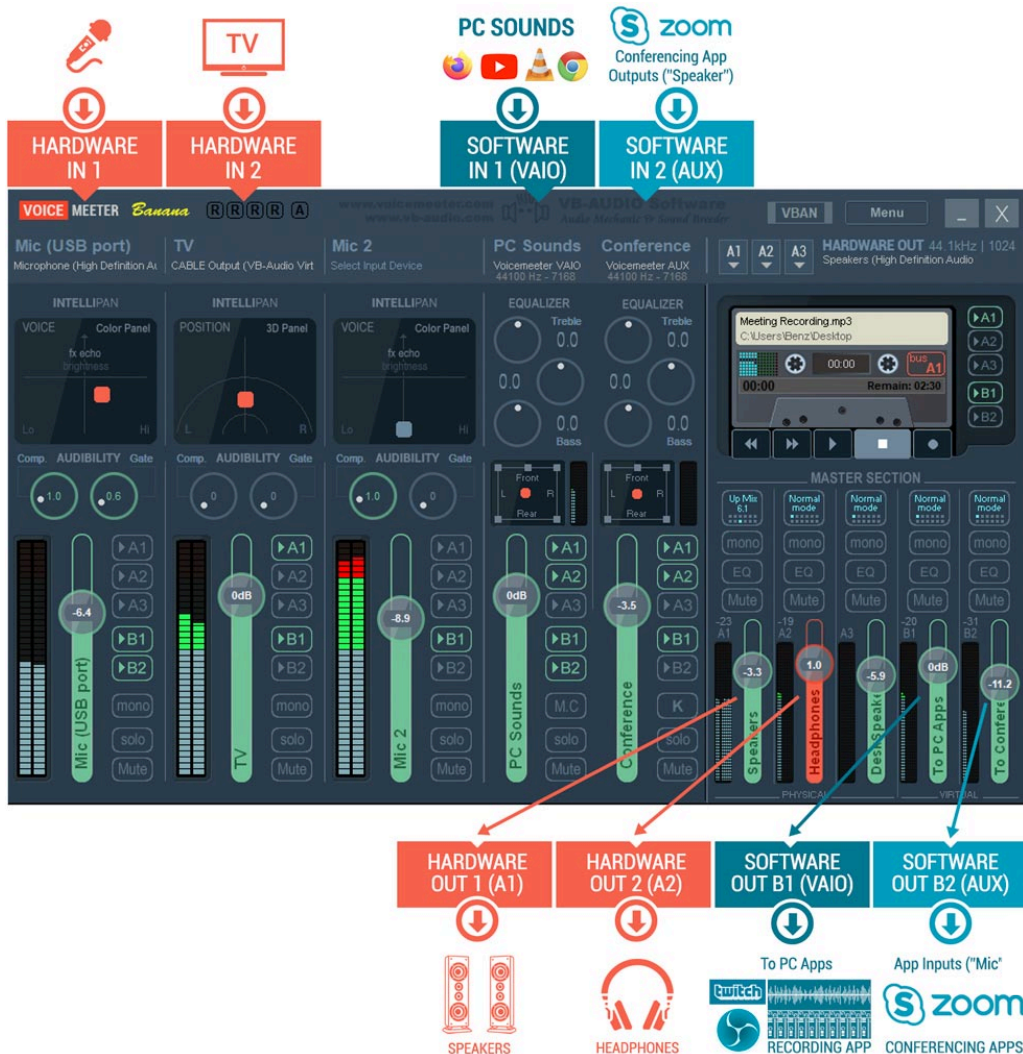




Setup VoiceMeeter Banana with Zoom, Skype or other conferencing apps.

- Mic, external audio (TV) on the Hardware Ins 1/2.
- All Windows apps on VoiceMeeter's Software input 1 (VAIO).
- VOIP conferencing app(s) on VoiceMeeter's Software input 2 (AUX).
- Speakers and Headphones on Hardware Outs A1/A2.
- Mix of all channels to software Out B1, e.g. for recording.



SET VOICEMEETER AS YOUR DEFAULT PLAYBACK AND RECORDING DEVICE.

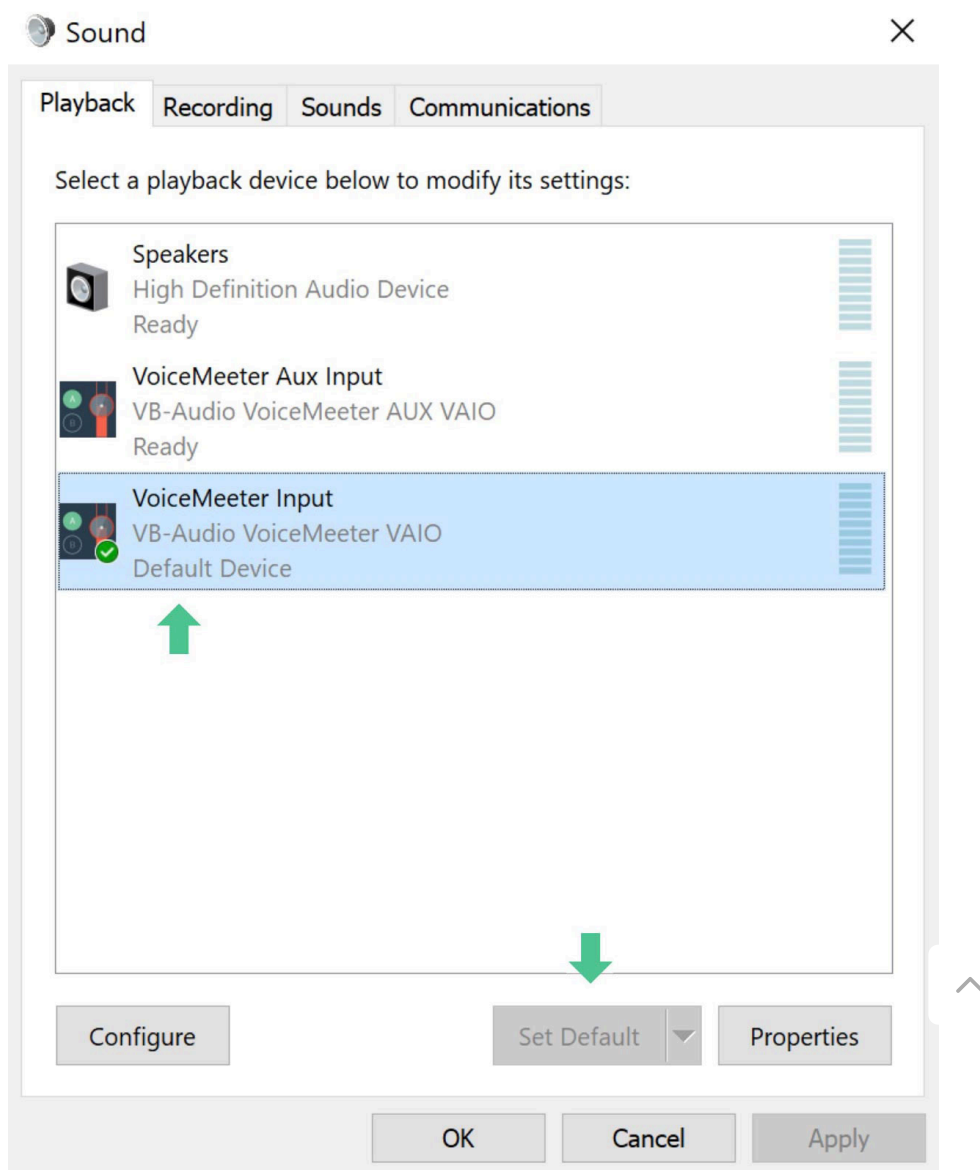
Download and install VoiceMeeter Banana. Reboot!

After successful installation, the Windows system audio device list includes a virtual VoiceMeeter playback and recording devices (VAIO + AUX).

- A.** Open the Sound Control Panel (see below how to find it) and select the Playback tab.

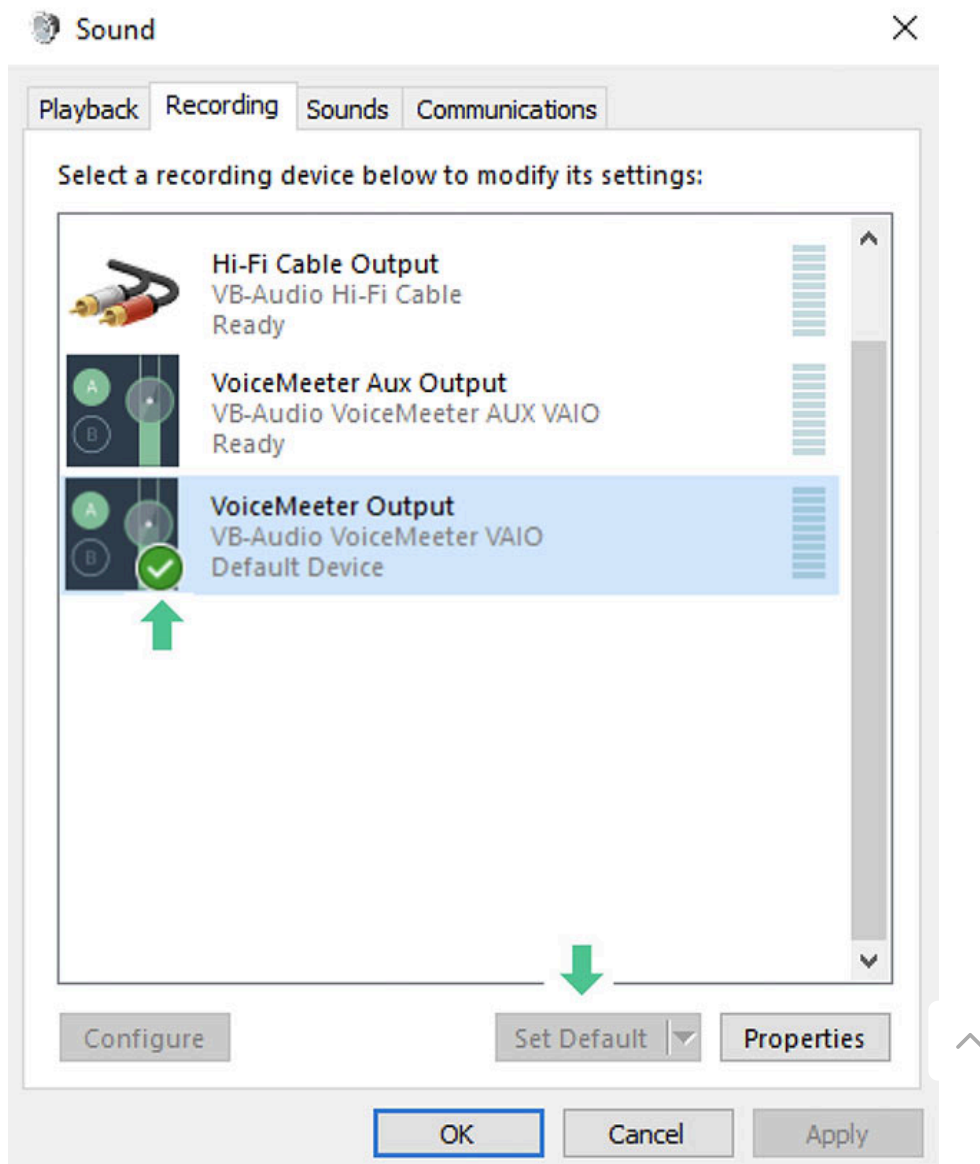
Set **VB-Audio VoiceMeeter VAIO** as your **Default** Playback audio device.

A green checkmark appears on the VoiceMeeter Input icon.



B. Now select the Recording tab and set **VoiceMeeter Output (VAIO)** as your **Default** recording device. This means, all PC apps get audio on their inputs from Bus B1 in VoiceMeeter (= Software Output 1).

A green checkmark appears on the VoiceMeeter Output icon.





You can find the Windows Sound Control Panel:

Settings / Sound / Related Settings / Sound Control Panel (Scroll down or on the right of the Setup/Sound page)

VOICEMEETER has to appear with the VOICEMEETER icon, otherwise there is a possible driver installation problem (usually caused by Windows 10 updates).

Every Windows audio will pass now through VoiceMeeter. This means, every app (e. g. Web browsers, Skype, Video ...) will play on VoiceMeeter's VAIO Input (= Software Input 1).



ADDITIONAL SETUP: SET THE VOICEMEETER AUX I/O AS DEFAULT
WINDOWS COMMUNICATION DEVICE

2

SETUP YOUR HARDWARE

Connect and manage your Microphone, Headset, Speakers and other external audio devices.

1. Select the device driver of your microphone from the input menu of Hardware Input 1.

Speak and check the microphone signal on the peak meter of your selected input strip.



2. Connect an external audio device, e. g. your TV, to the audio input of the computer. If you are using a soundcard, plug the cable into an input port. Select the device driver of your computer audio or soundcard from the input menu of Hardware Input 2.

This way you can listen to movie sounds on your computer headphones or speakers. You can even use VoiceMeeter's UpMix Bus mode to create Surround sound from the TV stereo signal ([learn more](#)).



3. Assign your speakers to output A1 (WDM or MME driver – usually WDM provides a lower latency). Rename this bus to speakers (right click).

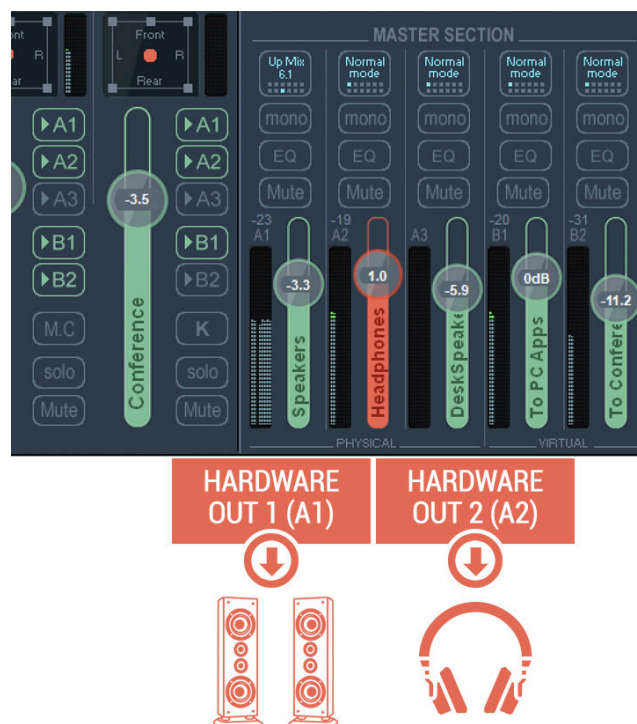
Assign your headphones to output A2. Rename this bus to headphones (right click).

Why do you need different outputs (= buses)?

Usually you want to listen to a conference on your headphones, so your microphone does not pick up the sound of your Skype contact and play it back to him or create feedback loop. This can happen, if Skype/Zoom sound is played on your speakers.

At the same time you want to use different volume levels or effects (e.g. EQ, Surround UpMix) on your headphones and speakers.

With this output setup you can now simply press buttons A1/A2 in your input channels to send sounds either to speakers and headphones – or to both.





Your Mic or other audio hardware comes with its own driver(s). Select a WDM driver for the best latency and audio performance. A MME driver works too, but this format usually introduces more latency. Use an MME driver only if a WDM driver is not present or does not work correctly with your hardware configuration (e. g. crackles).

SETUP YOUR SOFTWARE APPS

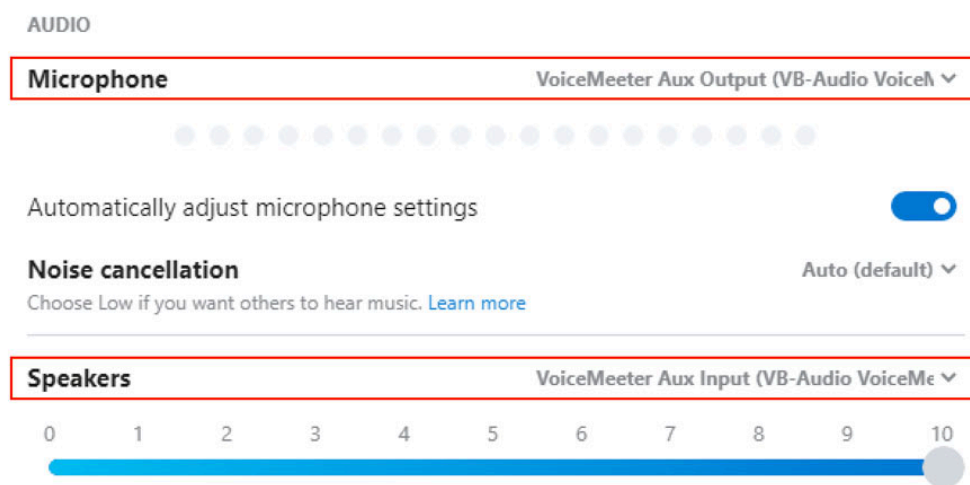
After you set the Default Windows audio devices to VoiceMeeter VAIO (see step 1), all PC sounds play to the VoiceMeeter VAIO input (= software input 1). Rename this channel to PC Sounds (right click on the fader).

Additionally, we want to route all sounds from our VOIP conferencing apps, like Skype and Zoom, to our software input 2 (= AUX input). This way we can separate our incoming VOIP sound from all other PC sounds (Browser, Youtube, Spotify ...).

To do this, choose:

- a. VoiceMeeter Aux Output as Microphone (= input) in Skype/Zoom.
- b. VoiceMeeter Aux Input as Speakers (= Output) in Skype/Zoom.

Skype Audio Setup dialog:



With this configuration you can fully control, which channel mix goes to your conferencing apps and where you want to listen to the Skype/Zoom output – on speakers and/or headphones:




Output Device ("Speaker")



**SOFTWARE
IN 1 (VAIO)**



**SOFTWARE
IN 2 (AUX)**



**SOFTWARE
OUT 2 (AUX)**



Input Device ("Mic")



**ROUTE YOUR INPUTS TO
BUSES.
RECORD THEM WITH A
RECORDING SOFTWARE**

Manage and separate your Microphone, TV and conferencing apps.

1. VoiceMeeter works like a traditional mixer with busses. You can send any input channel to any output bus – if you send more than one to a bus, these channels get mixed together.

In this setup simply press A1 (assigned to Output Bus A1 = speakers) on any channel to listen to the signals on your Speakers. Press button A2 to on any channel to listen to the signals on your headphones. This way, you can simply send signals to different destinations or listen to them on several outputs.

2. To record your mix or selected signals choose VoiceMeeter's VAIO Output as input device in your recording software (e.g. Audacity, Reaper). Now you can play and record all inputs by pressing the Button B1 in their channels. This way the mix of your Mic on Hardware Input 1, the TV sound on Hardware Input 2, PC Sounds on Software Input 1 (VAIO), Skype/Zoom on Software Input 2 (Aux) is recorded in the assigned recording software.

